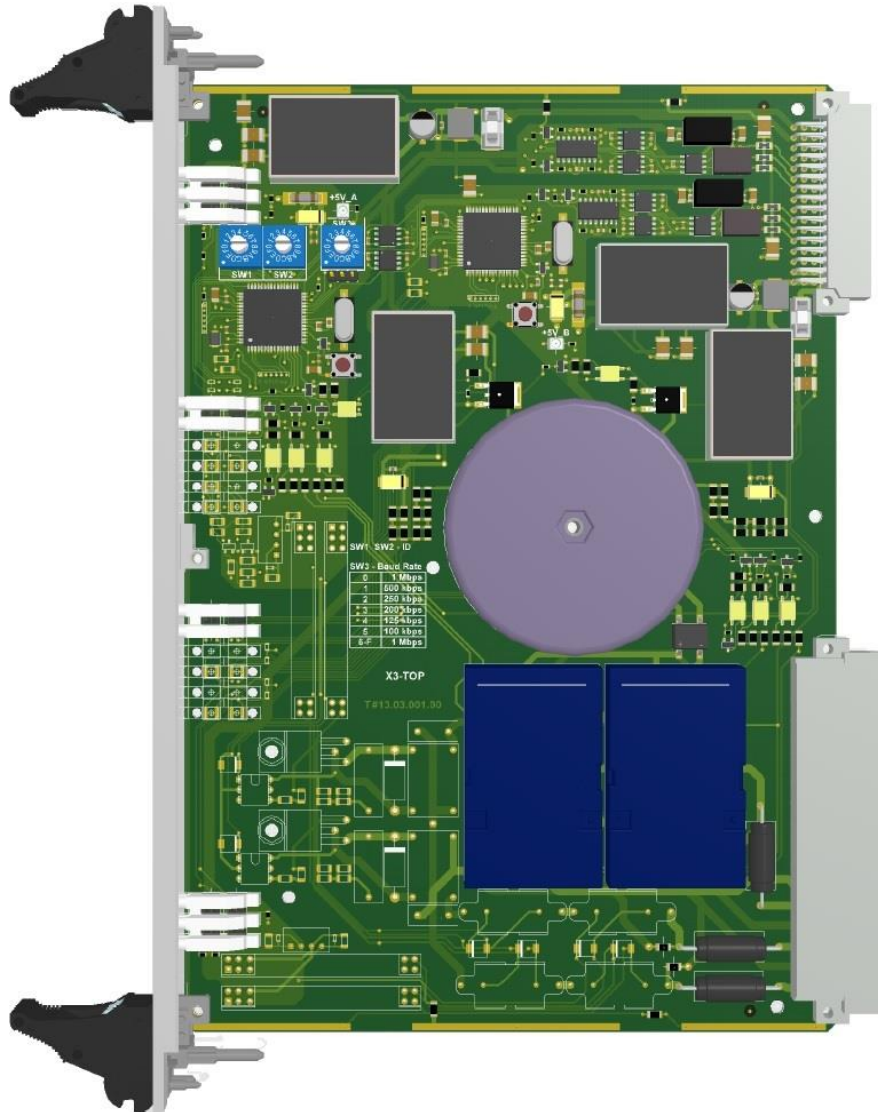




# X3-INT

## INTERFACE CARD

ID 30204



The X3-INT card is designed as an interface for station traffic control devices. The internal connection system allows the construction of relay interfaces to other systems, does not measure the current in the executive circuits. The card processes signals from and to the processor via two channels. The card supports hot-swap capability. Replacement of a damaged module can take place with the power supply of the entire card cage.



### BASIC PARAMETERS:

**Operating temperature range:** -10°C to +70°C  
-40°C to +85°C (optionally)

**Relative Humidity:** to 95%

### BUS CONNECTOR INTERFACES:

**Power supply:** 24V DC  $\pm$ 20% / 150mA

**CAN:** 1 x CAN max 1Mb/s

**Outputs:** 2 separated changeover contacts  
typical current 120mA / 24V DC; maximum current 2A; typical operating voltage 24V DC; maximum operating voltage 250 V AC / DC

### OTHER INTERFACES:

**Switches:** 3 x 16-position switch  
SW1 + SW2- module address  
SW3 – transmission speed

### CONNECTOR INTERFACES ON THE FRONT PANEL:

**LEDs:** Logic power supply and life indicator  
Outputs status

### GALVANIC ISOLATION:

PE housing / Logic power supply at 3kV DC  
PE housing / Object at 3kV DC  
Object / Logic supply at 3kV DC

### SOFTWARE:

Integrated

### POSSIBLE MANUFACTURING OPTIONS:

Conformal coating

### DIMENSIONS:

Card dimensions: double Eurocard 6U 233x160 mm  
Front panel width: 6TE (30 mm)  
Weight: ca. 280g

